



---

工卡重工机械（山东）有限公司

Gongka Heavy Industry Machinery (Shandong) Co.,Ltd

地址：山东省东营市广饶县西水工业园

电话：0546-7793258

传真：0546-7793258

WWW.TRUCKWHEEL.COM

---



工卡重工机械（山东）有限公司  
Gongka Heavy Industry Machinery (Shandong) Co.,Ltd

**[WWW.TRUCKWHEEL.COM](http://WWW.TRUCKWHEEL.COM)**

# 公司简介

Brief Introduction of Company



工卡重工机械（山东）有限公司成立于 2019 年，位于山东省东营市广饶县西水工业园，为山东正宇车轮集团公司子公司。正宇车轮集团起始于2006年，占地 30 万平方米，是一家集独立研发、设计、制造、销售与国际贸易于一体的专业化钢制车轮生产企业。

公司掌握多项核心生产技术，拥有自营进出口权，自主研发的“东轮”、“金铂锐”、“金铂正宇”、“路通”、“SPW”、“工卡重工”等几大品牌受到了东风、比亚迪、中通、宇通等国内知名汽车制造商青睐，还远销欧美、日本、韩国、东南亚、中东、非洲、中亚、俄罗斯等 30 多个国家和地区。

Gongka Heavy Industry Machinery (Shandong) Co.,Ltd was established in 2019, located in Xishui Industrial Park, Guangrao County, Dongying City, Shandong Province. It's a subsidiary of Shandong Zhengyu Wheel Group was founded in 2006, covering an area of 300000 square meters, It's a professional steel and aluminum wheel manufacturing integrating independent research and development, design, manufacture, sales and international trade.

The company maintains several core production technology, has the self-managerial import & export rights. "Donglun" "JinboRui" "JinboZhengyu" "Lutong" "SPW" "GKZG" and other major brands are favored by Dongfeng, BYD, Zhongtong, Yutong and other domestic well-known automobile manufacturers, The company's products are also exported to Europe and the United States, Japan, Korea, southeast Asia, the Middle East, Africa central Asia and Russia and other more than 30 countries and regions.



# 企业文化

## Enterprise culture

**核心形象语——**  
精工智造 承载未来

**核心价值观——**  
文明 诚信 公正 创新

**企业愿景——**  
做世界一流的高端车轮制造者

**企业使命——**  
提供更安全、更环保、更经济的车轮解决方案，  
为绿色生活助力。

**企业精神——**  
没有一切就没有效益，没有效益就没有一切

**经营理念——**  
以人为本 持续发展 成人达己 协作共赢

**发展定位——**  
品质感 科技感 价值感

**Core image words ——**  
Precision work and intelligent manufacturing, creating bright future

**Core values ——**  
Civilization, integrity, justice, innovation

**Enterprise vision ——**  
To be the world-class high-end wheel manufacturer

**Corporate mission ——**  
To provide safer, greener and more economic wheel solution, to  
dedicate to the green life

**Spirit of enterprise ——**  
No benefit if no everything, and no everything if no benefit

**Business philosophy ——**  
People oriented, sustainable development, achieving self by  
benefiting others, win-win cooperation

**Development orientation ——**  
Sense of quality, sense of science and technology, sense  
of value



# 优质产品

## High quality products

质量至上产品为王，目前公司涉及载重汽车型钢钢圈、轻卡系列、5°DC、15°DC 无内胎车轮以及工程机械类车轮 100 多个品种，拥有“盾驰”“东轮”“赫盾”“CCZY”等多个著名品牌。

Quality first and product is king. At present, the company are involved in truck steel rims, light truck series, 5°DC, 15°DC tubeless wheels and engineering wheel and more than 100 types of vehicle wheels, including "Dunchi", "Donglun", "Hedun", "CCZY", and several other famous brands.

有内胎钢制车轮>>>  
Inner tube steel wheel



5.5-16



6.00-16



7.00-20

无内胎钢制车轮 >>>  
Tubeless steel wheel



22.5X6.75



22.5X8.25



22.5X9.00



22.5X9.75



22.5X11.75



## 型钢车轮参数表

### Parameter list of shape steel wheel

序号	产品编号 PART NO.	轮辋型号 RIM SIZE	轮辋厚度 RIM THICKNESS (mm)	轮辐厚度 DISC THICKNESS (mm)	螺栓孔 NUT HOLE			分布圆 P.C.D	中心孔 C.B.D	偏距 OFFSET	装柜量 PCS/20'FCL	风孔形 式	载重量 LOAD CAPACITY ( kg )	配用轮胎 EQUIPPED WITHTYRE
					孔数 NO.	直径 DIA.	孔状 HOLE TYPE							
1	ZYXL551601	5.5-16	标准厚度	10	5	φ 29+0.5	SR22	φ 203.2	φ 146	127	845	5-35*80	1550	700-16
2	ZYXL551602	5.5-16	标准厚度	10	5	φ 32.5	SR22	φ 208	φ 150	127	845	5-35*80	1550	700-16
3	ZYXL551603	5.5-16	标准厚度	10	6	φ 32.5	SR22	φ 222.25	φ 164	127	845	6-35*80	1550	700-16
4	ZYXL551604	5.5-16	标准厚度	10	5	φ 32.5	SR22	φ 203.2	φ 146	127	845	5-35*80	1550	700-16
5	ZYXL551605	5.5-16	标准厚度	10	5	φ 29	1*45°	φ 203.2	φ 146	127	845	5-35*80	1550	700-16
6	ZYXL601601	6.0-16	标准厚度	12	5	φ 29	SR22	φ 203.2	φ 146	130	780	5-35*80	2000	750-16
7	ZYXL601602	6.0-16	标准厚度	12	5	φ 32.5	SR22	φ 208	φ 150	130	780	5-35*80	2000	750-16
8	ZYXL601603	6.0-16	标准厚度	12	6	φ 32.5	SR22	φ 222.25	φ 164	130	780	6-35*80	2000	750-16
9	ZYXL601604	6.0-16	标准厚度	12	5	φ 32.5	SR22	φ 203.2	φ 146	130	780	5-35*80	2000	750-16
10	ZYXL651601	6.5-16	标准厚度	12	6	φ 32.5	SR22	φ 222.25	φ 164	140	715	6-35*80	2000	825-16
11	ZYXL651602	6.5-16	标准厚度	12	5	φ 32.5	SR22	φ 208	φ 150	140	715	5-35*80	2000	825-16
12	ZYXL651603	6.5-16	标准厚度	12	5	φ 29	SR22	φ 203.2	φ 146	140	715	5-35*80	2000	825-16
13	ZYXL651604	6.5-16	标准厚度	12	5	φ 32.5	SR22	φ 203.2	φ 146	140	715	5-35*80	2000	825-16
14	ZYXL652001	6.5-20	标准厚度	14	10	φ 26	1*45°	φ 335	φ 281	145	400	10-36*60	2400	825-20
15	ZYXL652002	6.5-20	标准厚度	14	10	φ 26	1*45°	φ 285.75	φ 220	145	400	10-36*60	2400	825-20
16	ZYXL652003	6.5-20	标准厚度	14	10	φ 32.5	SR22	φ 285.75	φ 222	145	400	10-36*60	2400	825-20
17	ZYXL652004	6.5-20	标准厚度	14	6	φ 32.5	SR22	φ 222.25	φ 164	145	400	6-35*80	2400	825-20
18	ZYXL652005	6.5-20	标准厚度	14	8	φ 26	1*45°	φ 275	φ 214	145	400	8-35*80	2400	825-20
19	ZYXL652006	6.5-20	标准厚度	14	8	φ 26	1*45°	φ 275	φ 221	145	400	8-35*80	2400	825-20
20	ZYXL652007	6.5-20	标准厚度	14	8	φ 32.5	SR22	φ 275	φ 214	145	400	8-35*80	2400	825-20
21	ZYXL652008	6.5-20	标准厚度	14	8	φ 32.5	SR22	φ 285	φ 221	145	400	8-36*60	2400	825-20
22	ZYXL702001	7.0-20	标准厚度	14	10	φ 26	1*45°	φ 335	φ 281	162	400	10-36*60	2800	900-20
23	ZYXL702002	7.0-20	标准厚度	14	10	φ 32.5	SR22	φ 285.75	φ 222	162	400	10-36*60	2800	900-20
24	ZYXL702003	7.0-20	标准厚度	14	10	φ 26	1*45°	φ 285.75	φ 220	162	400	10-36*60	2800	900-20
25	ZYXL702004	7.0-20	标准厚度	14	8	φ 32.5	SR22	φ 285	φ 221	162	400	8-35*80	2800	900-20
26	ZYXL702005	7.0-20	标准厚度	14	8	φ 32.5	SR22	φ 275	φ 214	162	400	8-35*80	2800	900-20
27	ZYXL702006	7.0-20	标准厚度	14	8	φ 26	1*45°	φ 275	φ 221	162	400	8-35*80	2800	900-20
28	ZYXL702007	7.0-20	标准厚度	14	8	φ 26	1*45°	φ 275	φ 214	162	400	8-35*80	2800	900-20
29	ZYXL702008	7.0-20	标准厚度	14	8	φ 26	1*45°	φ 275	φ 221	0	400	-	2800	900-20
30	ZYXL752001	7.5-20	标准厚度	14	10	φ 26	1*45°	φ 335	φ 281	165	360	10-36*60	3200	1000-20
31	ZYXL752002	7.5-20	标准厚度	14	10	φ 32.5	SR22	φ 285.75	φ 222	165	360	10-36*60	3200	1000-20

序号	产品编号 PART NO.	轮辋型号 RIM SIZE	轮辋厚度 RIM THICKNESS (mm)	轮辐厚度 DISC THICKNESS (mm)	螺栓孔 NUT HOLE			分布圆 P.C.D	中心孔 C.B.D	偏距 OFFSET	装柜量 PCS/ 20FCL	风孔形 式	载重量 LOAD CAPACITY (kg)	配用轮胎 EQUIPPED WITHTYRE
					孔数 NO.	直径 DIA.	孔状 HOLE TYPE							
1	ZYXL551601	5.5-16	标准厚度	10	5	φ 29+0.5	SR22	φ 203.2	φ 146	127	845	5-35*80	1550	700-16
33	ZYXL752004	7.5-20	标准厚度	14	8	φ 32.5	SR22	φ 285	φ 221	165	360	8-35*80	3000	1000-20
34	ZYXL752005	7.5-20	标准厚度	14	8	φ 32.5	SR22	φ 275	φ 214	165	360	8-35*80	3000	1000-20
35	ZYXL752006	7.5-20	标准厚度	14	8	φ 26	1*45°	φ 275	φ 221	165	360	8-35*80	3200	1000-20
36	ZYXL752007	7.5-20	标准厚度	14	8	φ 26	1*45°	φ 275	φ 214	165	360	8-35*80	3200	1000-20
37	ZYXL752008	7.5-20	标准厚度	14	6	φ 21	1*45°	φ 275	φ 221	0	360	-	3000	1000-20
38	ZYXL802001	8.0-20	标准厚度	14	10	φ 26	1*45°	φ 335	φ 281	173	320	10-36*60	3350	1100-20
39	ZYXL802002	8.0-20	加重轮辋	16	10	φ 26	1*45°	φ 335	φ 281	173	320	10-φ 36	3600	1100-20
40	ZYXL802003	8.0-20	标准厚度	14	10	φ 26	1*45°	φ 285.75	φ 220	173	320	10-36*60	3350	1100-20
41	ZYXL802004	8.0-20	标准厚度	14	10	φ 32.5	SR22	φ 285.75	φ 222	173	320	10-36*60	3350	1100-20
42	ZYXL802005	8.0-20	标准厚度	14	8	φ 32.5	SR22	φ 285	φ 221	173	320	8-35*80	3350	1100-20
43	ZYXL802006	8.0-20	标准厚度	14	8	φ 32.5	SR22	φ 275	φ 214	173	320	8-35*80	3350	1100-20
44	ZYXL802007	8.0-20	标准厚度	14	8	φ 26	1*45°	φ 275	φ 221	173	320	8-35*80	3350	1100-20
45	ZYXL802008	8.0-20	标准厚度	14	8	φ 26	1*45°	φ 275	φ 214	173	320	8-35*80	3350	1100-20
46	ZYXL852001	8.5-20	标准厚度	14	10	φ 26	1*45°	φ 335	φ 281	175	320	10-36*60	3800	1200-20
47	ZYXL852002	8.5-20	加重轮辋	16	10	φ 26	1*45°	φ 335	φ 281	175	320	10-φ 36	3900	1200-20
48	ZYXL852003	8.5-20	标准厚度	14	10	φ 26	1*45°	φ 285.75	φ 220	175	320	10-36*60	3800	1200-20
49	ZYXL852004	8.5-20	标准厚度	14	10	φ 32.5	SR22	φ 285.75	φ 222	175	320	10-36*60	3800	1200-20
50	ZYXL852005	8.5-20	标准厚度	14	8	φ 32.5	SR22	φ 285	φ 221	175	320	8-35*80	3800	1200-20
51	ZYXL852006	8.5-20	标准厚度	14	8	φ 26	1*45°	φ 275	φ 221	175	320	8-35*80	3800	1200-20
52	ZYXL852007	8.5-20	标准厚度	14	8	φ 26	1*45°	φ 275	φ 214	175	320	8-35*80	3800	1200-20
53	ZYXL852008	8.5-20	标准厚度	14	8	φ 26	1*45°	φ 275	φ 221	0	320	-	3800	1200-20
54	ZYXL852401	8.5-24	标准厚度	14	10	φ 26	1*45°	φ 335	φ 281	180	208	10-36*60	4000	1200-24
55	ZYXL852402	8.5-24	标准厚度	14	10	φ 26	SR18	φ 335	φ 281	180	208	10-36*60	4000	1200-24
56	ZYXL902001	9.0-20	加重轮辋	16	10	φ 26	1*45°	φ 335	φ 281	185	280	10-φ 36	4100	1200-20
57	ZYXL902002	9.0-20	标准厚度	14	10	φ 26	1*45°	φ 335	φ 281	185	280	10-36*60	3900	1200-20
58	ZYXL902003	9.0-20	标准厚度	14	10	φ 26	1*45°	φ 285.75	φ 220	185	280	10-36*60	3900	1200-20
59	ZYXL902004	9.0-20	标准厚度	14	10	φ 32.5	SR22	φ 285.75	φ 222	185	280	10-36*60	3900	1200-20

## 无内胎钢制车轮参数表

### Parameter list of Tubeless steel wheel

序号	产品编号 PART NO.	轮辋型号 RIM SIZE	轮辋厚度 RIM THICKNESS (mm)	轮辐厚度 DISC THICKNESS (mm)	螺栓孔 NUT HOLE			分布圆 P.C.D	中心孔 C.B.D	偏距 OFFSET	装柜量 QUANTITY/20'	风孔形式	载重量 LOAD CAPACITY (kg)	配用轮胎 EQUIPPED WITHTYRE
					孔数 NO.	直径 DIA.	孔状 HOLE TYPE							
1	ZYWL16055001	16.0*5.5	5	10	5	φ 29	SR22	φ 203.2	φ 146	118/125	500		1450	7.5R16
2	ZYWL16055002	16.0*5.5	5	10	6	φ 32	SR22	φ 222.25	φ 163	125	500		1450	7.5R16
3	ZYWL16055003	16.0*5.5	5	10	5	φ 32	SR22	φ 208	φ 150	118/125	500		1450	7.5R16
4	ZYWL16055004	16.0*5.5	5	10	6	φ 21	1*45	φ 170	φ 130	115	500		1450	7.5R16
5	ZYWL16060001	16.0*6.0	5	10	5	φ 32.5	SR22	φ 203.2	φ 146	125	500		1450	7.5R16
6	ZYWL16060002	16.0*6.0	5	10	6	φ 32.5	SR22	φ 222.25	φ 163	125	500		1450	7.5R16
7	ZYWL17560001	17.5*6.00	6	12	10	φ 26	1*45°	φ 225	φ 176	130	500	10-60*75	1850	8R17.5
8	ZYWL17560002	17.5*6.00	6	12	6	φ 32.5	SR22	φ 222.25	φ 164	130	500	6-60*75	1850	8R17.5
9	ZYWL17560003	17.5*6.00	6	12	5	φ 32.5	SR22	φ 208	φ 150	130	500	5-60*75	1850	8R17.5
10	ZYWL17560004	17.5*6.00	6	12	5	φ 32.5	SR22	φ 203.2	φ 146	130	500	5-60*75	1850	8R17.5
11	ZYWL17567501	17.5*6.75	6	12	10	φ 26	1*45°	φ 225	φ 176	140	450	10-60*75	2350	9R17.5
12	ZYWL17567502	17.5*6.75	6	12	6	φ 32.5	SR22	φ 222.25	φ 164	140	450	6-60*75	2350	9R17.5
13	ZYWL17567503	17.5*6.75	6	12	8	φ 26	1*45°	φ 275	φ 221	140	450	8-60*75	2350	9R17.5
14	ZYWL17567504	17.5*6.75	6	12	5	φ 32.5	SR22	φ 208	φ 150	140	450	5-60*75	2350	9R17.5
15	ZYWL17567505	17.5*6.75	6	12	5	φ 32.5	SR22	φ 203.2	φ 146	140	450	5-60*75	2350	9R17.5
16	ZYWL19567501	19.5*6.75	6	12	10	φ 26	1*45°	φ 225	φ 176	140	360	10-52*67	2350	9R19.5
17	ZYWL19567502	19.5*6.75	6	12	8	φ 32.5	SR22	φ 285	φ 221	140	360	8-52*67	2350	9R19.5
18	ZYWL19567503	19.5*6.75	6	12	8	φ 26	1*45°	φ 275	φ 221	140	360	8-52*67	2350	9R19.5
19	ZYWL19567504	19.5*6.75	6	12	6	φ 32.5	SR22	φ 222.25	φ 164	140	360	6-52*67	2350	9R19.5
20	ZYWL19567505	19.5*6.75	6	12	8	φ 26	1*45°	φ 275	φ 214	140	360	8-52*67	2350	9R19.5
21	ZYWL22567501	22.5*6.75	6	14	10	φ 26	1*45°	φ 335	φ 281	152	360	10-φ 71	2800	9R22.5
22	ZYWL22567502	22.5*6.75	6	14	10	φ 32.5	SR22	φ 285.75	φ 222	152	360	10-φ 71	2800	9R22.5
23	ZYWL22567503	22.5*6.75	6	14	10	φ 26	1*45°	φ 285.75	φ 220	152	360	10-φ 71	2800	9R22.5
24	ZYWL22567504	22.5*6.75	6	14	8	φ 32.5	SR22	φ 285	φ 221	152	360	8-φ 71	2800	9R22.5
25	ZYWL22567505	22.5*6.75	6	14	8	φ 26	1*45°	φ 275	φ 221	152	360	8-φ 71	2800	9R22.5
26	ZYWL22567506	22.5*6.75	6	14	8	φ 26	1*45°	φ 275	φ 214	152	360	8-φ 71	2800	9R22.5
27	ZYWL22567507	22.5*6.75	6	14	8	φ 32.5	SR22	φ 275	φ 214	152	360	8-φ 71	2800	9R22.5
28	ZYWL22575001	22.5*7.50	7	14	10	φ 26	1*45°	φ 335	φ 281	152	320	10-φ 71	3000	10R22.5
29	ZYWL22575002	22.5*7.50	7	14	10	φ 26	1*45°	φ 285.75	φ 220	165	320	10-φ 71	3000	10R22.5
30	ZYWL22575003	22.5*7.50	7	14	10	φ 32.5	SR22	φ 285.75	φ 222	165	320	10-φ 71	3000	10R22.5
31	ZYWL22575004	22.5*7.50	7	14	8	φ 32.5	SR22	φ 285	φ 221	165	320	8-φ 71	3000	10R22.5
32	ZYWL22575005	22.5*7.50	7	14	8	φ 32.5	SR22	φ 275	φ 214	165	320	8-φ 71	3000	10R22.5
33	ZYWL22575006	22.5*7.50	7	14	8	φ 26	1*45°	φ 275	φ 221	165	320	8-φ 71	3000	10R22.5
34	ZYWL22575007	22.5*7.50	7	14	8	φ 26	1*45°	φ 275	φ 214	165	320	8-φ 71	3000	10R22.5
35	ZYWL22575008	22.5*7.50	7	14	10	φ 26	1*45°	φ 335	φ 281	110	320	10-φ 50	3000	10R22.5
36	ZYWL22575009	22.5*7.50	7	14	8	φ 32.5	SR22	φ 285	φ 221	110	320	8-φ 50	3000	10R22.5
37	ZYWL22575010	22.5*7.50	7	无辐	-	-	-	-	-	110	280	-	3000	10R22.5
38	ZYWL22582501	22.5*8.25	7	14	10	φ 26	1*45°	φ 335	φ 281	169	280	10-φ 71	3600	11R22.5

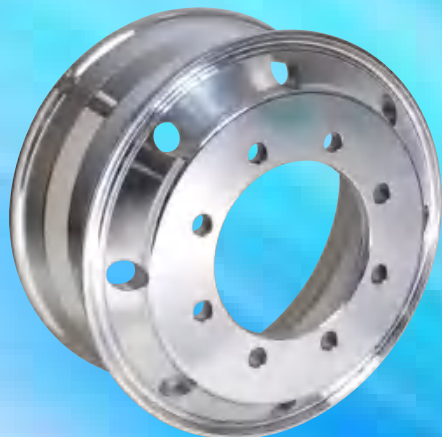
序号	产品编号 PART NO.	轮辋型号 RIM SIZE	轮辋厚度 RIM THICKNESS (mm)	轮辐厚度 DISC THICKNESS (mm)	螺栓孔 NUT HOLE			分布圆 PC.D	中心孔 C.B.D	偏距 OFFSET	装柜量 QUANTITY/20'	风孔形式	载重量 LOAD CAPACITY (kg)	配用轮胎 EQUIPPED WITHTYRE
					孔数	直径 DIA.	孔状 HOLE TYPE							
39	ZYWL22582502	22.5*8.25	7	14	10	φ 26	1*45°	φ 285.75	φ 220	169	280	10-φ 71	3600	11R22.5
40	ZYWL22582503	22.5*8.25	7	14	10	φ 32.5	SR22	φ 285.75	φ 222	169	280	10-φ 71	3600	11R22.5
41	ZYWL22582504	22.5*8.25	7	14	8	φ 32.5	SR22	φ 285	φ 221	169	280	8-φ 71	3600	11R22.5
42	ZYWL22582505	22.5*8.25	7	14	8	φ 32.5	SR22	φ 285	φ 221	110	280	8-φ 50	3600	11R22.5
43	ZYWL22582506	22.5*8.25	7	14	10	φ 26	1*45°	φ 335	φ 281	110	280	10-φ 50	3600	11R22.5
44	ZYWL22582507	22.5*8.25	7	14	8	φ 32.5	SR22	φ 275	φ 214	169	280	8-φ 71	3600	11R22.5
45	ZYWL22582508	22.5*8.25	7	14	8	φ 26	1*45°	φ 275	φ 214	169	280	8-φ 71	3600	11R22.5
46	ZYWL22582509	22.5*8.25	7	14	8	φ 26	1*45°	φ 275	φ 221	169	280	8-φ 71	3600	11R22.5
47	ZYWL22582510	22.5*8.25	7	无辐	-	-	-	-	-	120	280/320	-	3600	11R22.5
48	ZYWL22590001	22.5*9.00	7	14	10	φ 26	1*45°	φ 335	φ 281	175	280	10-φ 71	4250	12R22.5
49	ZYWL22590002	22.5*9.00	7	14	10	φ 26	1*45°	φ 285.75	φ 220	175	280	10-φ 71	4250	12R22.5
50	ZYWL22590003	22.5*9.00	7	14	10	φ 32.5	SR22	φ 285.75	φ 222	175	280	10-φ 71	4000	12R22.5
51	ZYWL22590004	22.5*9.00	7	14	8	φ 32.5	SR22	φ 275	φ 214	175	280	8-φ 71	4000	12R22.5
52	ZYWL22590005	22.5*9.00	7	14	8	φ 32.5	SR22	φ 285	φ 221	175	280	8-φ 71	4000	12R22.5
53	ZYWL22590006	22.5*9.00	7	14	8	φ 32.5	SR22	φ 285	φ 221	175	280	8-φ 71	4000	12R22.5
54	ZYWL22590007	22.5*9.00	7	14	8	φ 32.5	SR22	φ 285	φ 221	110	280	8-φ 71	4000	12R22.5
55	ZYWL22590008	22.5*9.00	7	14	10	φ 26	1*45°	φ 335	φ 281	110	280	10-φ 50	4000	12R22.5
56	ZYWL22590009	22.5*9.00	7	无辐	-	-	-	-	-	130	280/320	-	4250	12R22.5
57	ZYWL225900 (A) 01	22.5*9.00 凸峰	7	14	10	φ 26	1*45°	φ 335	φ 281	175	280	10-φ 80	4250	12R22.5
58	ZYWL225900 (A) 02	22.5*9.00 凸峰	7	14	10	φ 26	1*45°	φ 285.75	φ 220	175	280	10-φ 80	4250	12R22.5
59	ZYWL225900 (A) 03	22.5*9.00 凸峰	7	14	10	φ 32.5	SR22	φ 285.75	φ 222	175	280	10-φ 80	4000	12R22.5
60	ZYWL225900 (A) 04	22.5*9.00 凸峰	7	14	8	φ 32.5	SR22	φ 285	φ 221	175	280	8-φ 80	4000	12R22.5
61	ZYWL22597501	22.5*9.75	7	14	10	φ 26	1*45°	φ 335	φ 281	180	280	10-φ 71	4250	13R22.5
62	ZYWL22597502	22.5*9.75	7	14	10	φ 26	1*45°	φ 285.75	φ 220	180	280	10-φ 71	4250	13R22.5
63	ZYWL22597503	22.5*9.75	7	14	10	φ 32.5	SR22	φ 285.75	φ 222	180	280	10-φ 71	4000	13R22.5
64	ZYWL22597504	22.5*9.75	7	14	8	φ 32.5	SR22	φ 285	φ 221	180	280	8-φ 71	4000	13R22.5
65	ZYWL225117501	22.5*11.75	7	14	10	φ 26	1*45°	φ 335	φ 281		240	10-φ 50	3750	15R22.5
66	ZYWL225117502	22.5*11.75	7	14	10	φ 26	1*45°	φ 335	φ 281		240	10-φ 71	3750	15R22.5
67	ZYWL225117503	22.5*11.75	7	14	10	φ 26	1*45°	φ 335	φ 281		240	10-φ 50	3750	15R22.5
68	ZYWL225117504	22.5*11.75	7	14	10	φ 26	1*45°	φ 335	φ 281		240	10-φ 71	3750	15R22.5
69	ZYWL225117505	22.5*11.75	7	14	8	φ 26	1*45°	φ 275	φ 221		240	8-φ 50	3750	15R22.5
70	ZYWL225117506	22.5*11.75	7	14	8	φ 32.5	SR22	φ 285	φ 221		240	8-φ 50	3750	15R22.5
71	ZYWL225117507	22.5*11.75	7	14	8	φ 32.5	SR22	φ 285	φ 221		240	8-φ 71	3750	15R22.5
72	ZYWL225117508	22.5*11.75	7	14	8	φ 32.5	SR22	φ 285	φ 221		240	8-φ 71	3750	15R22.5
73	ZYWL24582501	24.5*8.25	7	14	10	φ 26	1*45°	φ 335	φ 281	169	208	10-φ 71	3600	11R24.5
74	ZYWL24582502	24.5*8.25	7	14	10	φ 26	1*45°	φ 285.75	φ 220	169	208	10-φ 71	3600	11R24.5
75	ZYWL24582503	24.5*8.25	7	14	10	φ 32.5	SR22	φ 285.75	φ 222	169	208	10-φ 71	3600	11R24.5
76	ZYWL24582504	24.5*8.25	7	14	8	φ 32.5	SR22	φ 285	φ 221	169	208	8-φ 71	3600	11R24.5

# 优质产品

## High quality products

作为商用车轻量化、高强度的领先产品，正宇锻造铝镁合金车轮有更轻、更坚固、更经济、更环保、更美观等优势，适用于卡车、客车、SUV轿车等车型。

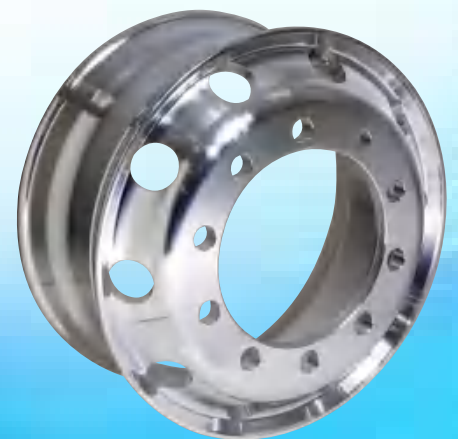
As a leading product of lightweight, high strength of the commercial vehicle, the forged aluminum magnesium alloy wheel of Zhengyu is lighter, stronger, more economical, environmental protection, more beautiful and other advantages, and is suitable for trucks, buses, SUV and other vehicle types.



19.5×7.5



22.5×7.5H



22.5×8.25



22.5x9.00



22.5x11.75



22.5x14.00



## 锻造铝镁合金的七大优势

Seven advantages of the forged aluminum magnesium alloy



### 1. 更轻便

正宇铝镁合金轮辋与普通钢制有内胎轮辋相比，重量减轻将近50%  
正宇铝镁合金车轮与普通钢制有内胎车轮相比，每套能减轻25公斤的重量

#### Lighter

Compared with regular steel wheel with inner tube, the weight aluminum magnesium alloy rim of Zhengyu is reduced nearly 50%.  
Compared with regular steel wheel with inner tube, the weight aluminum magnesium alloy rim of Zhengyu is reduced 25 kg each set

### 2. 更坚固

使车轮发生5厘米变形所需要的压力对比：  
正宇锻造铝镁合金车轮——71200公斤  
普通钢制车轮——13600公斤  
实验证明：正宇锻造铝镁合金车轮是普通钢制车轮强度的5倍



#### Stronger

Compared with the pressure needed to make the wheels happening 5cm deformation

Aluminum magnesium alloy rim of Zhengyu - 71200 kg  
Regular steel wheel - 13600 kg

The experimental results showed: The strength of the forged aluminum magnesium alloy wheel of Zhengyu is 5 times of the strength of the regular steel wheel.



### 3. 更散热

铝镁合金的热传导系数是钢铁的3倍，加上铝镁合金车轮的结构特征，极易将轮胎、底盘产生的热量排散在空气中。

- (1) 使汽车保持适当温度降低爆胎率
- (2) 明显延长轮胎使用里程
- (3) 大大降低刹车系统的维修费用

#### More heat dissipation

The heat conduction coefficient of the aluminum magnesium alloy is 3 times of steel, addition, the structural feature of the aluminum and magnesium alloy wheel is easily disperse the heat generated from the tire and base plate to the air

- (1) Make the car keeping the proper temperature to lower the rate of puncture
- (2) Obviously prolong the service mileage of tire
- (3) Greatly reduce the maintenance cost of the braking systems



## 4. 更美观

正宇锻造铝镁合金车轮一体成型，表面光滑容易处理，表面具有铝合金特有的金属质感，抛光技术更使产品具有高贵的风范和气质。

### More beautiful

The wheel of the forged aluminum magnesium alloy wheel of Zhengyu is an integral forming. The surface is smooth and is handled easily. The surface has aluminum alloy metal texture. The polishing technology makes products having noble style and quality.

## 5. 更平稳

正宇铝镁合金车轮一体锻造成型，真圆度不到0.1mm，而钢制车轮的圆度误差则在1mm以上；  
在满载荷时得到：正宇锻造铝镁合金车轮的平均变形量为0.52mm，而钢制车轮的平均变形量为2.24mm。  
正宇锻造铝镁合金车轮滚动阻力小，轮胎磨损也就均匀，行驶也就更平稳安全。



### More smoothly

The aluminum magnesium alloy wheel of Zhengyu is forged by an integral forming. The roundness is less than 0.1 mm, but the roundness error of steel wheels of is in more than 1 mm;  
When it is full load: The average deformation volume of the forged aluminum magnesium alloy wheel of Zhengyu is 0.52mm, but the average deformation volume of steel wheel is 2.24mm.  
The rolling resistance of the forged aluminum magnesium alloy wheel of Zhengyu is small, and the wear is also uniform, and the driving is more smooth and safe.



## 6. 更经济

假设一辆车年行驶30万公里，消耗柴油12.6万升，用正宇锻造铝镁合金车轮后，一年车辆油耗节省6300升，也就是车辆油耗节省41139元，车辆轮胎费用节省9900元，多载货的额外收入14400元，总共单车节省65439元。

注：轮胎寿命延长15%，轮胎寿命暂定20万公里（具体数据以实测为准）

### More economic

It is assumed that a car driving 300000 km, the consumed diesel oil is 126000 liters. After using the forged aluminum magnesium alloy wheel of Zhengyu, the oil consumption of the vehicle can be saved 6300 liters a year, that is the fuel consumption of the vehicle is saved 41139 Yuan, and the tire cost of vehicle is saved 9900 Yuan, and the additional income of more carrying cargo is 14400 Yuan, and the total saving for a single car is 65439 Yuan.

Note: The tire life is extended life by 15%, and tire life is fixed for the time being is 200000 kilometers (the specific data shall be based on the actual measurement)

## 7. 更环保

一般情况下，车辆每减重100kg，CO<sub>2</sub>的排放量即可减少5g/km；汽车每减少10%的重量，燃油消耗便可降低6%-8%。轻量化设计已成为降低运输车辆排放的迫切之需。

### More environmentally friendly

Under the normal situation, when the car reduces every 100kg in weight, the CO<sub>2</sub> emissions can be reduced 5g/km; and when the car reduces every 10% in weight, the fuel consumption can be reduced by 6% -8%. The lightweight design has become an urgent need to reduce the emissions of the transportation vehicle.





## 铝镁合金车轮参数表

Parameter list of the aluminum magnesium alloy wheel

产品名称 Product Name	产品编号 Part No.	尺寸 Size	外偏距 Outside offset (mm)	内偏距 Inside offset (mm)	轮辐厚度 Disc thickness(mm)	螺孔分度圆直径 P.C.D(mm)	螺孔数 bolt HOLES	螺孔直径 Stud(mm)	中心孔直径 C.B(mm)	载荷 MaxLoad(kg)	气门嘴 VALVE	装箱量 纸箱包装 20FCL
ZYTOA	TOA2283526A	22.5×8.25	167	142.5	24.5	φ335	10	φ26	φ281.2	3650	70MS	216
	TOA2283526B							φ26.75				
	TOA2283532A							φ32.5				
	TOA2283532B							φ32.5SR22				
ZYTAA	TAA2288526A	22.5×8.25	167	142.5	24.5	φ285.75	10	φ26	φ221	3650	70MS	216
	TAA2288526B							φ26.75				
	TAA2288532A							φ32.5				
	TAA2288532B							φ32.5SR22				
ZYTBA	TBA2288526A	22.5×8.25	167	142.5	24.5	φ285.75	10	φ26	φ220	3650	70MS	216
	TBA2288526B							φ26.75				
	TBA2288532A							φ32.5				
	TBA2288532B							φ32.5SR22				
ZYTCA	TCA2288532B	22.5×8.25	167	142.5	24.5	φ285	8	φ32.5SR22	φ220	3650	70MS	216
ZYTDA	TDA2288532B	22.5×8.25	167	142.5	24.5	φ285	8	φ32.5SR22	φ221	3650	70MS	216
ZYTOB	TOB2293526A	22.5×9.0	176.5	152	24.5	φ335	10	φ26	φ281.2	4125	70MS	216
	TOB2293526B							φ26.75				
	TOB2293532A							φ32.5				
	TOB2293532B							φ32.5SR22				
ZYTAB	TAB2298526A	22.5×9.0	176.5	152	24.5	φ285.75	10	φ26	φ221	4125	70MS	216
	TAB2298526B							φ26.75				
	TAB2298532A							φ32.5				
	TAB2298532B							φ32.5SR22				
ZYTBB	TBB2298526A	22.5×9.0	176.5	152	24.5	φ285.75	10	φ26	φ220	4125	70MS	216
	TBB2298526B							φ26.75				
	TBB2298532A							φ32.5				
	TBB2298532B							φ32.5SR22				
ZYTOC	TOC2273526A	22.5×7.5	162	138	24	φ335	10	φ26	φ281.2	3550	70MS	216
	TOC2273526B							φ26.75				
	TOC2273532A							φ32.5				
	TOC2273532B							φ32.5SR22				
ZYTAC	TAC2278526A	22.5×7.5	162	138	24	φ285.75	10	φ26	φ220	3550	70MS	216
	TAC2278526B							φ26.75				
	TAC2278532A							φ32.5				
ZYTBC	TBC2278532B	22.5×7.5	162	138	24	φ285	8	φ32.5SR22	φ221	3550	70MS	216
ZYTCC	TCC2278524A	22.5×7.5	162	138	24	φ275	8	φ24	φ221	3550	70MS	216
ZYTDC	TCC2278532A	22.5×7.5	162	138	24	φ275	8	φ32.5	φ221	3550	70MS	216
ZYTOD	TOD22113526A	22.5×11.75	25	0	25	φ335	10	φ26	φ281.2	4500	TR543E	189
	TOD22113526B							φ26.75				
ZYTAD	TAD22118526A	22.5×11.75	25	0	25	φ285.75	10	φ26	φ220	4500	TR543E	189
	TAD22118526B							φ26.75				
ZYTOE	TOE22113526A	22.5×11.75	145	120	25	φ335	10	φ26	φ281.2	4500	TR542	189
	TOE22113526B							φ26.75				
ZYTAE	TAE22118526A	22.5×11.75	145	120	25	φ285.75	10	φ26	φ220	4500	TR542	189
	TAE22118526B							φ26.75				

产品名称 Product Name	产品编号 Part No.	尺寸 Size	外偏距 Outside offset (mm)	内偏距 Inside offset (mm)	轮辐厚度 Disc thickness(mm)	螺孔分度圆直径 P.C.D(mm)	螺孔数 bolt HOLES	螺孔直径 Stud(mm)	中心孔直径 C.B(mm)	载荷 MaxLoad(kg)	气门嘴 VALVE	装箱量 纸箱包装 20'FCL
ZYT0F	TOF22133526A	22.5×13	14	-14	28	φ335	10	φ26	φ281.2	5200	TR543E	
	φ26.75											
ZYTAF	TAF22138526A	22.5×13	14	-14	28	φ285.75	10	φ26	φ220	5200	TR543E	
	φ26.75											
ZYT0G	T0G22143526A	22.5×14	51	22	29	φ335	10	φ26	φ281.2	5800	TR543E	
	φ26.75											
ZYTAG	TAG22148526A	22.5×14	51	22	29	φ285.75	10	φ26	φ220	5800	TR543E	
	φ26.75											
ZYT0H	TOH19677524B	19.5×6.75	148	126	22	φ275	8	φ24.5	φ221	2750	70MS	
	TOH19677526A											
	TOH19677526B											
	TOH19677532A											
ZYT0I	TOI1977524B	19.5×7.5	157	135	22	φ275	8	φ24.5	φ221	3000	70MS	336
	TOI1977526A											
	TOI1977526B											
	TOI1977532A											
ZYTAI	TAI1978526A	19.5×7.5	157	135	22	φ285.75	10	φ26	φ221	3000	70MS	
ZYT0J	TOJ1762526A	17.5×6.0	134	114	20	φ225	10	φ26	φ176	1750	TR544C	
ZYTAJ	TAJ1762232B	17.5×6.0	134	114	20	φ222.25	10	φ32.5SR22	φ165	1750	TR544C	
ZYTBJ	TBJ1762224A	17.5×6.0	134	114	20	φ222.25	6	φ24	φ164	1750	TR544C	
	TBJ1762232A											
	TBJ1762232B											
ZYT0K	TOK17674526A	17.5×6.75	140	120	20	φ245	6	φ26	φ202	2500	TR544C	412
ZYTAK	TAK17672526A	17.5×6.75	140	120	20	φ225	6	φ26	φ176	2500	TR544C	
ZYTOL	TOL2483526A	24.5×8.25	168.5	144	24.5	φ335	10	φ26	φ281.2	3650	TR544C	201
	TOL2483526B											
	TOL2483532A											
	TOL2483532B											
ZYTAL	TAL2488526A	24.5×8.25	168.5	144	24.5	φ285.75	10	φ26	φ221	3650	TR544C	
	TAL2488526B											
	TAL2488532A											
	TAL2488532B											

# 技术实力

## Technical strength

前进的道路上充满着对先进技术和科技创新的执着追求，引进世界先进的阴极电泳外观喷涂生产线、无内胎轮辋滚型成型机等先进设备和技术，逐步实现了生产过程的数字化和自动化，成为国内同行业的创新实践者。

公司顺利通过英国 NQA 的 ISO/TS16949:2009 质量管理体系认证并获得相应证书。

On the road of making progress, we are seeking for advanced technology and scientific and technological innovation. The company adopted the world's advanced cathode electrophoretic coating production line, tubeless rim rolling machine and other advanced equipment and technology, and gradually realized the digitization and automation of production process, has become into the innovation practitioner of the domestic industry.

The company has been successfully passed ISO/TS16949:2009 quality management system certification of England NQA and has obtained the relevant certificate.





## 先进设备

公司引进世界上最先进的锻造铝镁合金车轮的生产工艺，设备均采购自国际行业一流水平制造厂商，德国 LEIFELD 公司及 SSB 公司数控旋压机，意大利 IMT 公司数控加工中心，西班牙 AUTOPULIT 公司抛光机，瑞士 ABB 公司机器人，美国 BTI 公司全自动检测设备，引进高自动化生产线 5 条，配备先进设备 120 余台，机器人 50 余台，年产量达 300 万只。

The company has introduced the world's most advanced production technology of forged aluminum magnesium alloy wheels, and all the equipments are purchased from the international first class industry manufacturers: The CNC spinning machine of Germany LEIFELD and SSB company,, the CNC machining center of Italy IMT, and the polishing machine of Spain AUTOPULIT company, and the robot of Switzerland ABB company, as well as the automatic detection equipment of BTI company of the United States, and has introduced 5 high automation production lines, equipped with more than 120 sets of advanced equipments, the robot is more than 50 units, the annual output is 3 million pieces.



工卡重工业机械（山东）有限公司  
Bongka Heavy Industry Machinery (Shandong) Co.,Ltd

WSC 700/6C

WSC 700

PANUC R-2000B







# 检测研发中心

## Detection research and development center

为紧跟世界技术潮流，不断强化和提升钢制车轮的制造水平，公司汇聚了行业资深工程师团队打造了独立的技术研发中心，形成了一整套符合自身特点的车轮开发和生产技术，推动生产工艺立于时代潮头。

In order to closely follow the world technology trend, and to constantly strengthen and improve the manufacturing level of steel wheels, the company has gathered the experienced engineers team of industry and has built the independent technology research and development center, has formed a whole set of the wheel development and production technology which accords with the self-characteristics, and has promoted the production technology to lead the trend of the time.



径向疲劳试验机  
Radial fatigue testing machine



金相显微镜  
Metallographic microscope



材料拉伸试验机  
Material stretch test machine

三坐标  
Coordinate measuring machine



金属分析仪  
Metal analyzer



车轮弯曲试验机  
Bending tester of vehicle wheel



面对质量问题零容忍、零妥协是正宇的自我要求，为此成立国家级检测中心，承担了产品把控、检测技术改进、先进技术研究的任务，使得产品都能代表正宇的形象与品牌力量。

Zero tolerance, zero compromise to the quality problem is the self-requirement of Zhengyu, therefore, the company has set up the national testing center which undertakes the tasks of product control, detection technology improvement, and advanced technology research, makes the product able to represent the image and brand strength of Zhengyu.

# 荣誉资质

## Honor and qualification

公司的持续健康发展离不开对商业文明的自觉遵守和倡导，多次获得 3A 级文明信用企业、安全生产先进单位、守合同重信用企业、文明诚信民营企业、统计工作规范化五星级单位、实施重大项目先进企业、技术创新示范企业等殊荣。

The sustained and healthy development of the company cannot separate from the business civilization. The company has won AAA grade civilization credit enterprise, the advanced unit of safety production, and the trustworthy and contract-credit enterprise, civilization integrity private enterprise, statistical work standardization five-star unit, advanced enterprise OF implementation of major projects, technology innovation demonstration enterprise and so on.

